

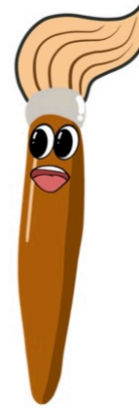


what am I ?

I have paint on me.

I am used to make a picture.

I am a brush
but not for hair.



paintbrush



what am I ?

I am sweet to eat.

I am made from beans.

I melt when I am hot.



chocolate



what am I ?

I am in a chest.

I am buried under the
sand.

I make people excited when
they find me.



treasure



What am I ?

I am tall.

I only move on a windy day.

I have many green leaves.



tree



What am I ?

I can run and jump
but I don't have legs.

I am worn on
people's feet.



shoes



What am I ?

I don't move
but I am alive.

I need water, sun and soil
to grow.



I clean the air.



plant

